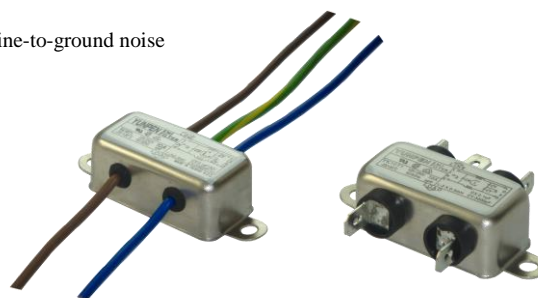


## YK-T1,SERIES

### FEATURES

- General purpose filter providing effective EMI suppression of both line-to-line and line-to-ground noise
- Low cost
- 250 Fasten terminals
- All parts are approved by UL,CSA and VDE



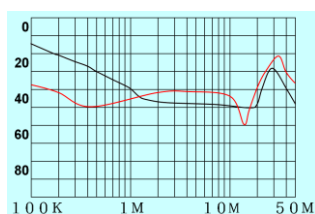
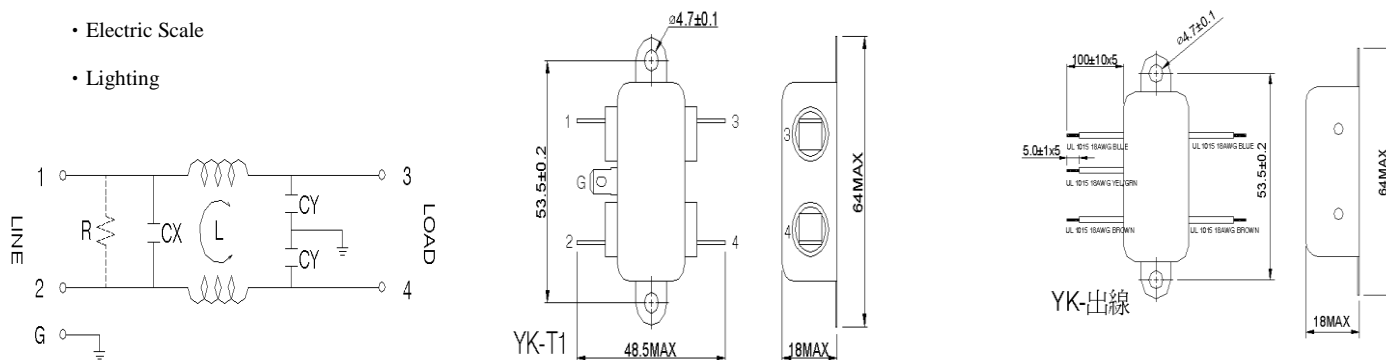
YK	01~10	T1	-	YK	Option	Option	Option	00/01	C
P/N	Current rating	Terminal type		Case Type	Inductor	Capacitor X	Capacitor Y	Resistor	Wire
YK	01/03/06/10A	T1:250 Faston terminals	-		1A:6.5mH Max. 3A:2.5mH Max. 6A:0.8mH Max. 10A:0.55mH Max.	0.0047 ~ 0.22uF	0~3300 pF	00-without "R" 01-with "R"	Lead wire

### SPECIFICATIONS

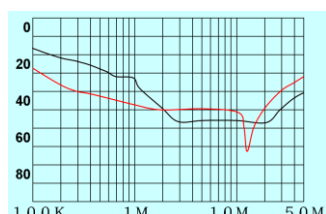
ITEM/MODEL		YK01T1	YK03T1	YK06T1	YK10T1
RATED CURRENT		1A	3A	6A	10A
RATED VOLTAGE		250 VAC			
POWER LINE FREQUENCY		50/60Hz			
HIPOT RATING (ON MIN)	LINE TO LINE	1450VDC			
	LINE TO GROUND	2250VDC			
LEAKAGE CURRENT		0.8mA MAX.			
INSULATION RESISTANCE		100MΩ MIN 250V DC			
TEMPERATURE RISE		30°C MAX.			
OPERATING TEMPERATURE		-25~+85°C			

### Application

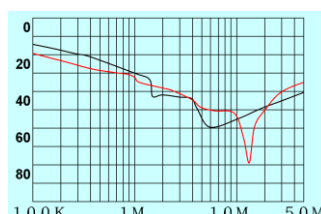
- Electric Scale
- Lighting



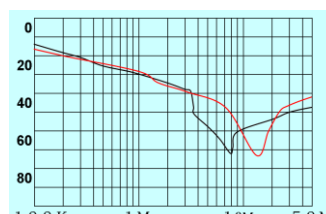
YK01T1



YK03T1



YK06T1



YK10T1